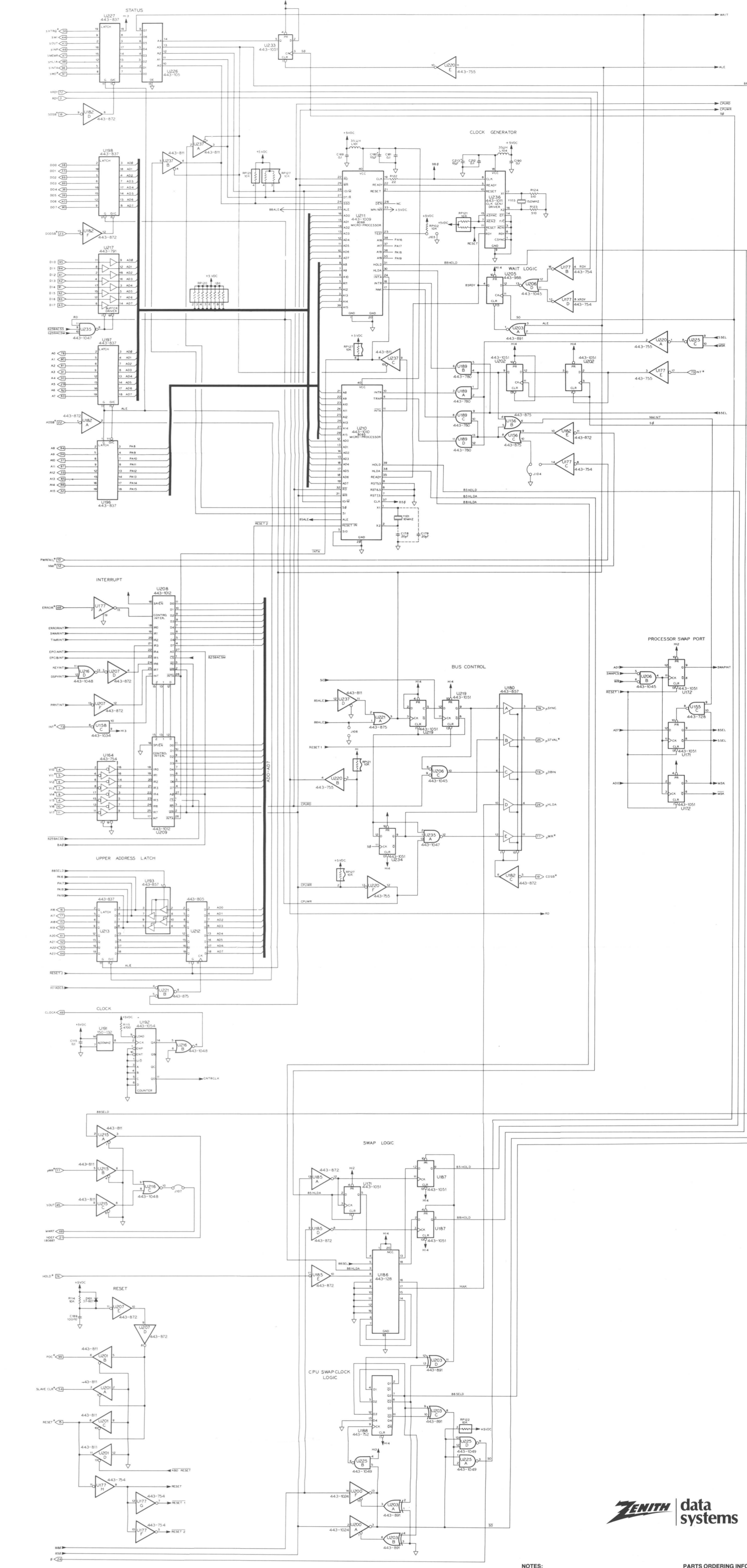
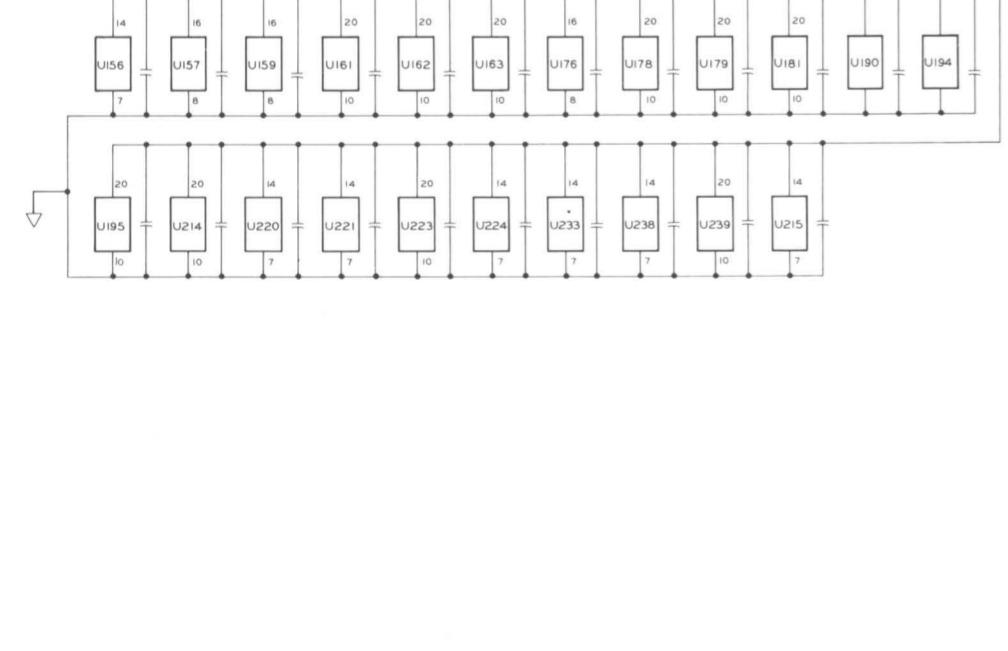
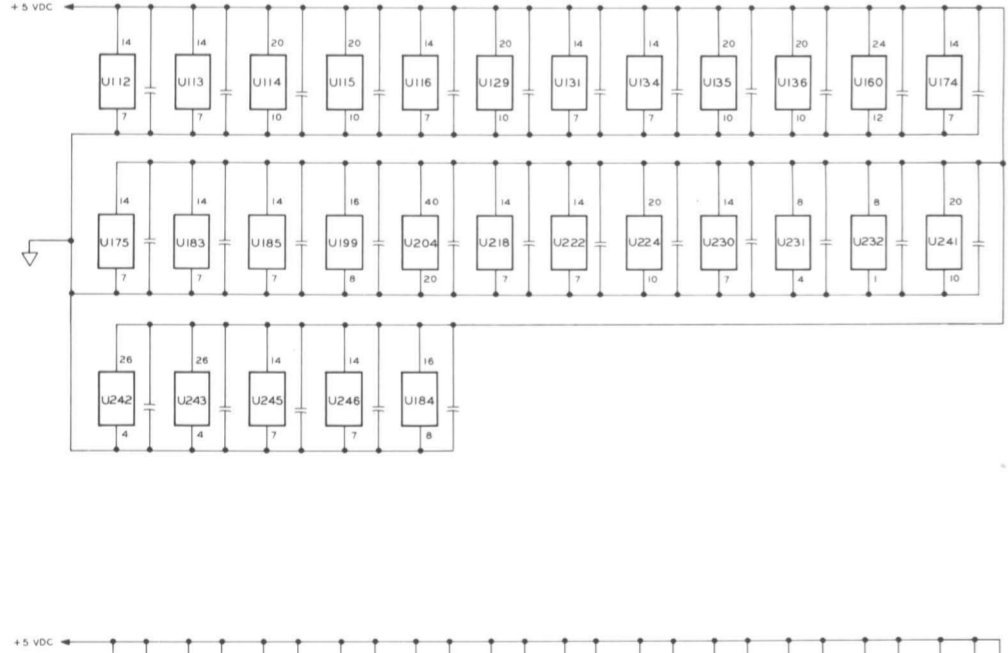
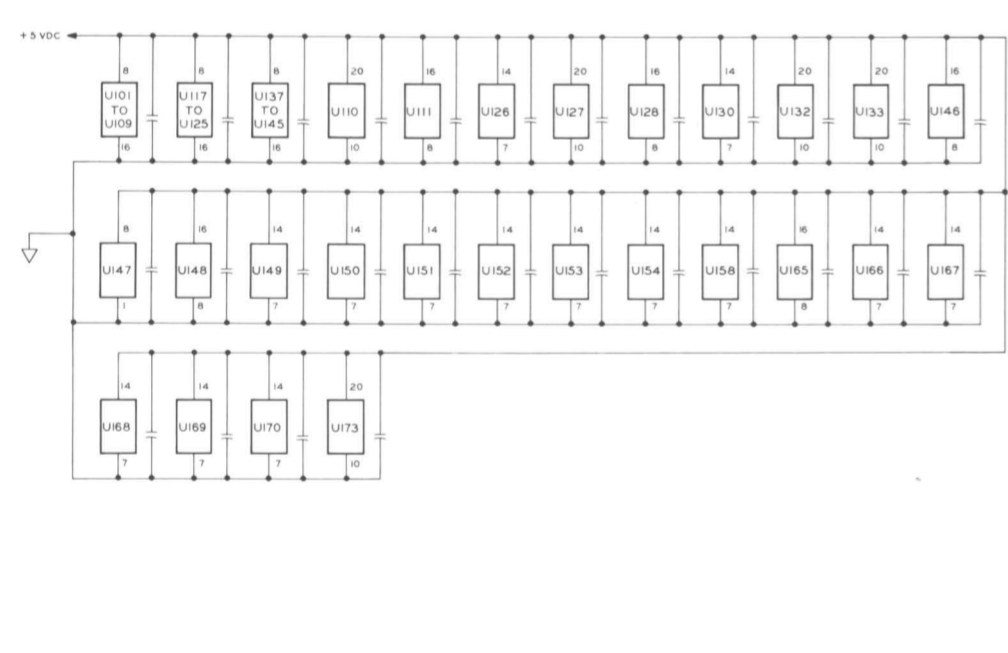
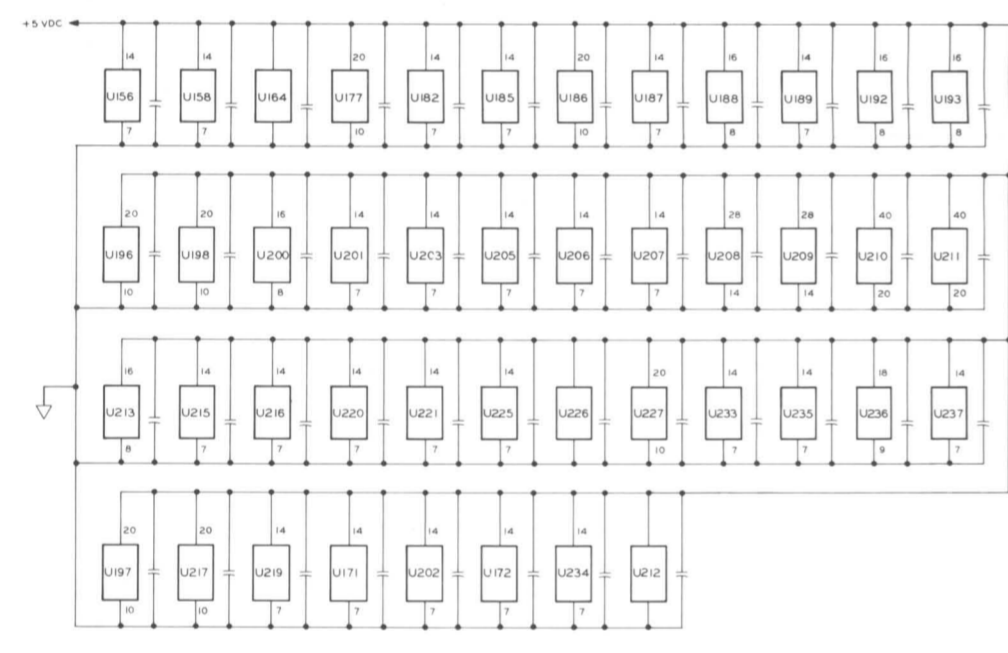
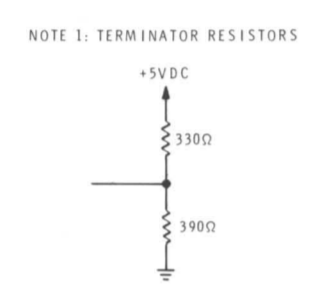


FIN	STORAL	COMPONENT	RESISTOR	TERMINATOR
1	4	5VDC	-	-
2	12	5VDC	-	-
3	380T	RP116-6	4700	-
4	380T	RP116-2	330	-
5	380T	RP116-3	330	-
6	380T	RP116-4	330	-
7	380T	RP116-5	330	-
8	380T	RP116-6	330	-
9	380T	RP116-7	330	-
10	380T	RP116-8	330	-
11	380T	RP116-9	330	-
12	380T	RP116-10	330	-
13	380T	RP116-11	330	-
14	380T	RP116-12	330	-
15	380T	RP116-13	330	-
16	380T	RP116-14	330	-
17	380T	RP116-15	330	-
18	380T	RP116-16	330	-
19	380T	RP116-17	330	-
20	380T	RP116-18	330	-
21	380T	RP116-19	330	-
22	380T	RP116-20	330	-
23	380T	RP116-21	330	-
24	380T	RP116-22	330	-
25	380T	RP116-23	330	-
26	380T	RP116-24	330	-
27	380T	RP116-25	330	-
28	380T	RP116-26	330	-
29	380T	RP116-27	330	-
30	380T	RP116-28	330	-
31	380T	RP116-29	330	-
32	380T	RP116-30	330	-
33	380T	RP116-31	330	-
34	380T	RP116-32	330	-
35	380T	RP116-33	330	-
36	380T	RP116-34	330	-
37	380T	RP116-35	330	-
38	380T	RP116-36	330	-
39	380T	RP116-37	330	-
40	380T	RP116-38	330	-
41	380T	RP116-39	330	-
42	380T	RP116-40	330	-
43	380T	RP116-41	330	-
44	380T	RP116-42	330	-
45	380T	RP116-43	330	-
46	380T	RP116-44	330	-
47	380T	RP116-45	330	-
48	380T	RP116-46	330	-
49	380T	RP116-47	330	-
50	380T	RP116-48	330	-
51	380T	RP116-49	330	-
52	380T	RP116-50	330	-
53	380T	RP116-51	330	-
54	380T	RP116-52	330	-
55	380T	RP116-53	330	-
56	380T	RP116-54	330	-
57	380T	RP116-55	330	-
58	380T	RP116-56	330	-
59	380T	RP116-57	330	-
60	380T	RP116-58	330	-
61	380T	RP116-59	330	-
62	380T	RP116-60	330	-
63	380T	RP116-61	330	-
64	380T	RP116-62	330	-
65	380T	RP116-63	330	-
66	380T	RP116-64	330	-
67	380T	RP116-65	330	-
68	380T	RP116-66	330	-
69	380T	RP116-67	330	-
70	380T	RP116-68	330	-
71	380T	RP116-69	330	-
72	380T	RP116-70	330	-
73	380T	RP116-71	330	-
74	380T	RP116-72	330	-
75	380T	RP116-73	330	-
76	380T	RP116-74	330	-
77	380T	RP116-75	330	-
78	380T	RP116-76	330	-
79	380T	RP116-77	330	-
80	380T	RP116-78	330	-
81	380T	RP116-79	330	-
82	380T	RP116-80	330	-
83	380T	RP116-81	330	-
84	380T	RP116-82	330	-
85	380T	RP116-83	330	-
86	380T	RP116-84	330	-
87	380T	RP116-85	330	-
88	380T	RP116-86	330	-
89	380T	RP116-87	330	-
90	380T	RP116-88	330	-
91	380T	RP116-89	330	-
92	380T	RP116-90	330	-
93	380T	RP116-91	330	-
94	380T	RP116-92	330	-
95	380T	RP116-93	330	-
96	380T	RP116-94	330	-
97	380T	RP116-95	330	-
98	380T	RP116-96	330	-
99	380T	RP116-97	330	-
100	380T	RP116-98	330	-



- NOTES:
- ALL RESISTOR VALUES ARE IN OHMS (N = 1,000, M = 1,000,000). ALL RESISTORS ARE 1/4-WATT, 5% UNLESS OTHERWISE SPECIFIED.
  - ALL CAPACITOR VALUES ARE IN μF (MICROFARADS), UNLESS OTHERWISE SPECIFIED.
  - REFER TO THE CIRCUIT BOARD X-RAY VIEWS FOR THE PHYSICAL LOCATION OF PARTS.

LEGEND:

- CHASSIS GROUND
- CIRCUIT BOARD GROUND
- DIRECTION
- SIGNAL FROM S-100 BUS
- SIGNAL TO S-100 BUS
- MECHANICAL CONNECTION
- MALE CONNECTION
- FEMALE CONNECTION
- NO CONNECTION
- CONNECTION
- CALIBRATION OR TEST POINT

PARTS ORDERING INFORMATION:

If you order a part from Zenith Data Systems, use the (HE) prefix. Example: HE 443-730

If you order a part from Heath Company, DO NOT use the (HE) prefix. Example: 443-730

For semiconductor type numbers (Example: 74LS153), refer to the "Semiconductor Identification Chart."

INDEX:

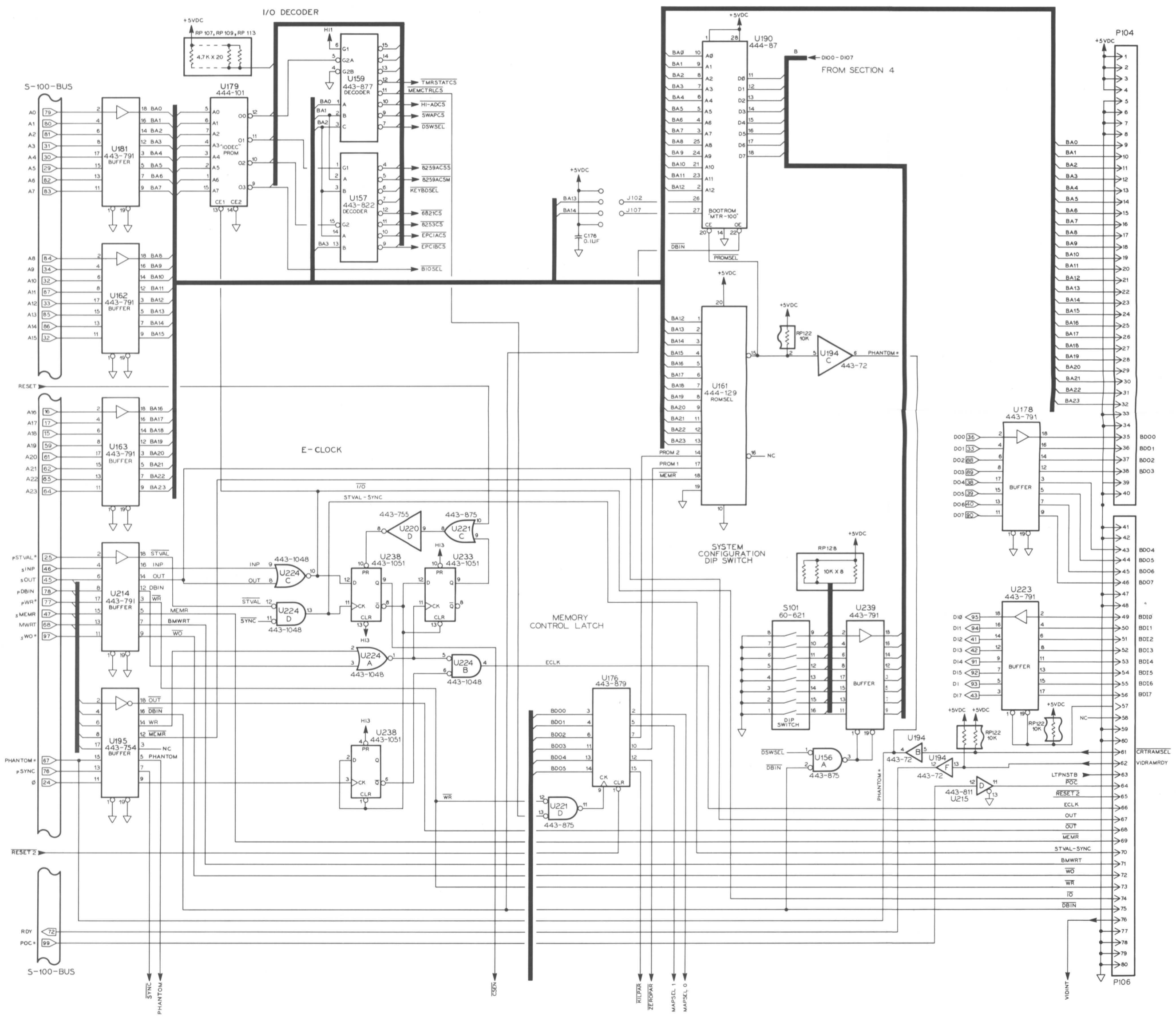
Sheet 1 of 4  
8085, 8086, clock generator, interrupt, CPU clock swapping, swap logic, reset, clock

Sheet 2 of 4  
system configuration DIP switch, E-clock, I/O decoder

Sheet 3 of 4  
8085 multiplexer, wait state generator, RAM parity generator, arbitration and TC timing

Sheet 4 of 4  
serial ports (modem, printer), parallel ports, keyboard encoder, keyboard matrix, timer

Z-100 COMPUTER  
MAIN BOARD SCHEMATIC  
**SHEET 1 OF 4**



**NOTES:**

1. ALL RESISTOR VALUES ARE IN OHMS (k=1,000, M=1,000,000) ALL RESISTORS ARE 1/4-WATT, 5% UNLESS OTHERWISE SPECIFIED.
2. ALL CAPACITOR VALUES ARE IN  $\mu$ F (MICROFARADS), UNLESS OTHERWISE SPECIFIED.
3. REFER TO THE CIRCUIT BOARD X-RAY VIEWS FOR THE PHYSICAL LOCATION OF PARTS.

**LEGEND:**

1. CHASSIS GROUND
2. CIRCUIT BOARD GROUND
3. DIRECTION
4. SIGNAL FROM S-100 BUS
5. SIGNAL TO S-100 BUS
6. MECHANICAL CONNECTION
7. MALE CONNECTION
8. FEMALE CONNECTION
9. NO CONNECTION
10. CONNECTION
11. CALIBRATION OR A TEST POINT

**PARTS ORDERING INFORMATION:**

If you order a part from Zenith Data Systems, use the (HE) prefix. Example:  
HE 443-730

If you order a part from Heath Company, DO NOT use the (HE) prefix. Example:  
443-730

For semiconductor type numbers (Example: 74LS153), refer to the "Semiconductor Identification Chart."

**INDEX:**

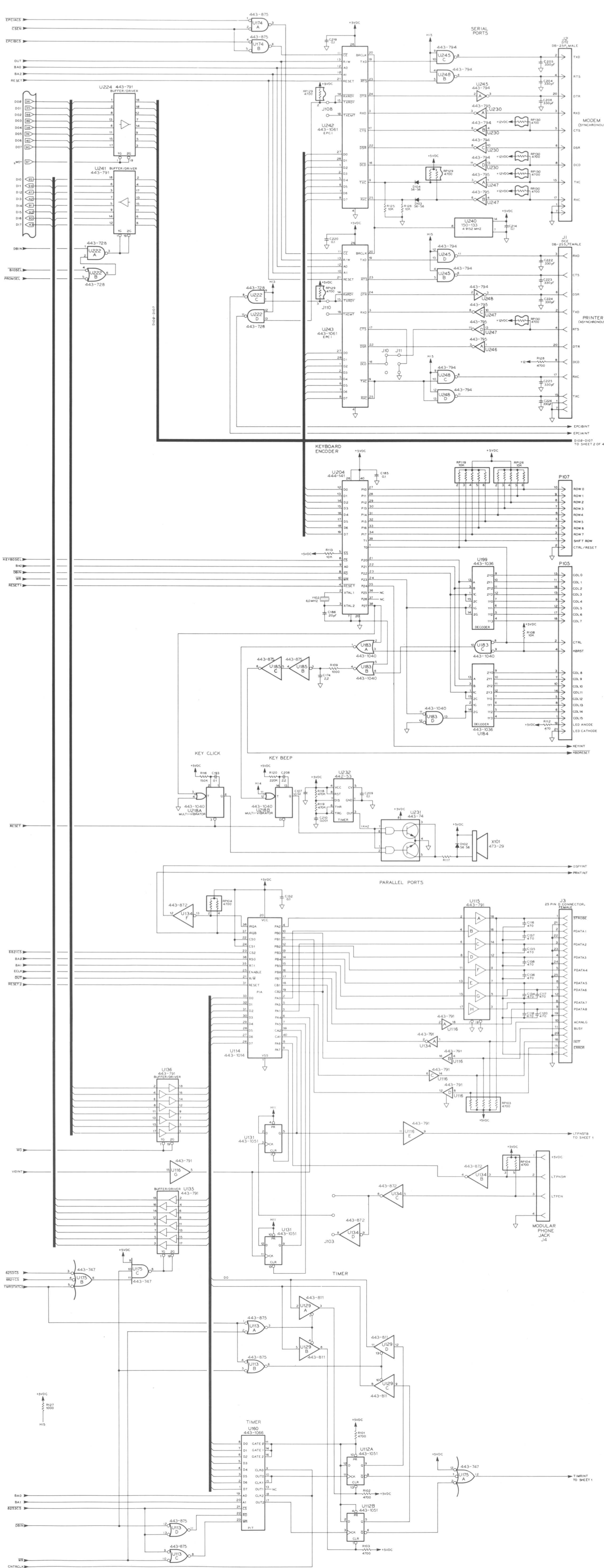
- Sheet 1 of 4  
8088, 8085, clock generator, interrupt, CPU clock swapping, swap logic, reset, clock
- Sheet 2 of 4  
system configuration DIP switch, E-clock, I/O decoder
- Sheet 3 of 4  
address multiplexer, wait state generator, RAM, parity generator, arbitration and TIC timing
- Sheet 4 of 4  
serial ports (modem, printer), parallel ports, keyboard encoder, keyboard matrix, timer

**Z-100 COMPUTER  
MAIN BOARD SCHEMATIC**

# SHEET 2 OF 4







**NOTES:**

1. ALL RESISTOR VALUES ARE IN OHMS (K = 1,000, M = 1,000,000) ALL RESISTORS ARE 1/4-WATT, 5% UNLESS OTHERWISE SPECIFIED.
2. ALL CAPACITOR VALUES ARE IN  $\mu$ F (MICROFARADS), UNLESS OTHERWISE SPECIFIED.
3. REFER TO THE CIRCUIT BOARD X-RAY VIEWS FOR THE PHYSICAL LOCATION OF PARTS.

**LEGEND:**

1. CHASSIS GROUND
2. CIRCUIT BOARD GROUND
3. DIRECTION
4. SIGNAL FROM S-100 BUS
5. SIGNAL TO S-100 BUS
6. MECHANICAL CONNECTION
7. MALE CONNECTION
8. FEMALE CONNECTION
9. NO CONNECTION
10. CONNECTION
11. CALIBRATION OR A TEST POINT

**PARTS ORDERING INFORMATION:**

If you order a part from Zenith Data Systems, use the (HE) prefix. Example: HE 443-730  
 If you order a part from Heath Company, DO NOT use the (HE) prefix. Example: 443-730  
 For semiconductor type numbers (Example: 74LS153), refer to the "Semiconductor Identification Chart."

**INDEX:**

- Sheet 1 of 4  
8088, 8085, clock generator, interrupt, CPU clock swapping, swap logic, reset, clock
- Sheet 2 of 4  
system configuration DIP switch, E-clock, I/O decoder
- Sheet 3 of 4  
address multiplexer, wait state generator, RAM, parity generator, arbitration and TIC timing
- Sheet 4 of 4  
serial ports (modem, printer), parallel ports, keyboard encoder, keyboard matrix, timer

**Z-100 COMPUTER  
MAIN BOARD SCHEMATIC  
SHEET 4 of 4**